

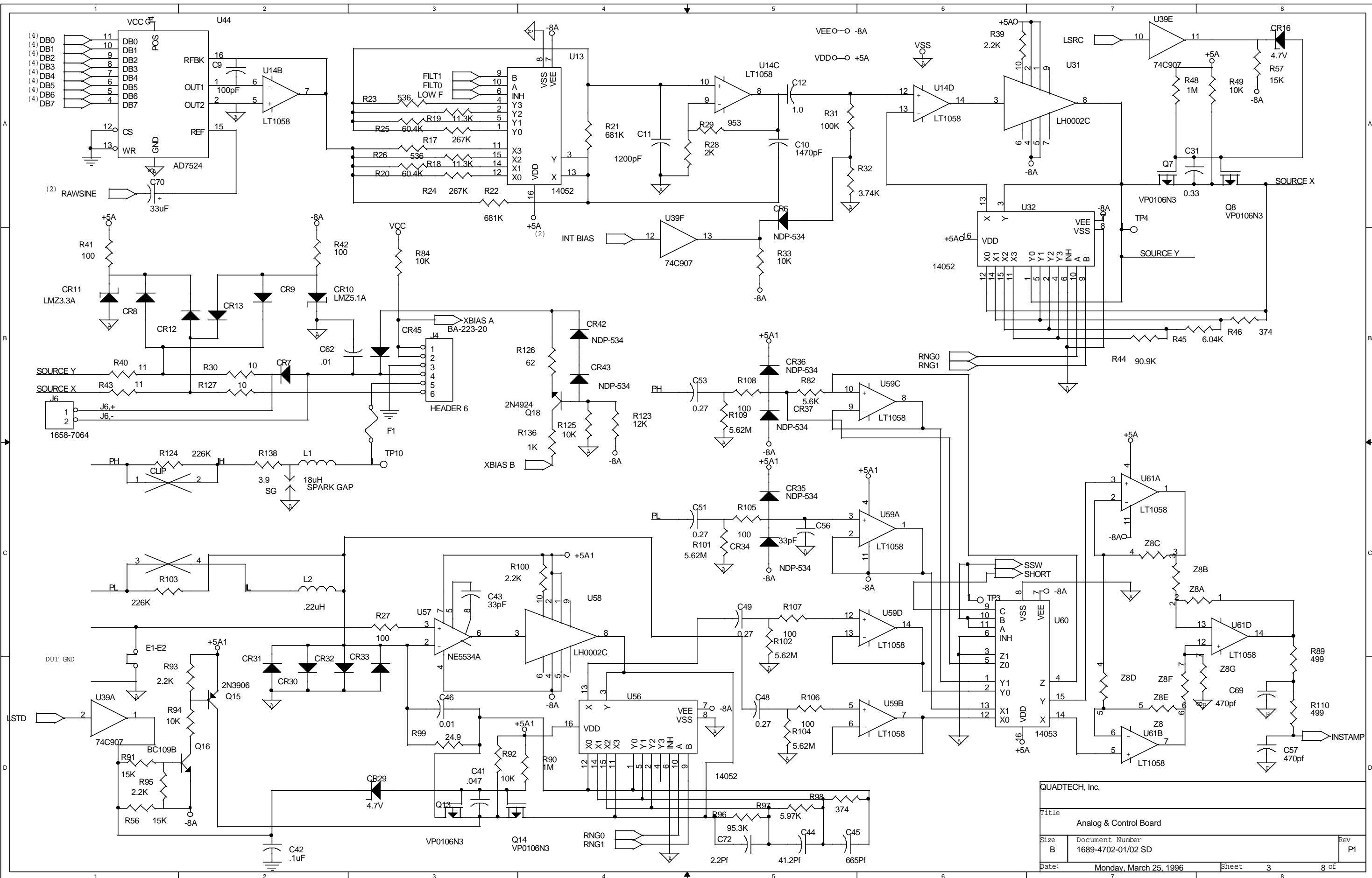
PROPRIETARY:

THIS DOCUMENT CONTAINS PROPRIETARY DATA OF QUADTECH, INC. OR USE OF ANY PART THEREOF MAY BE MADE EXCEPT BY WRITTEN PERMISSION

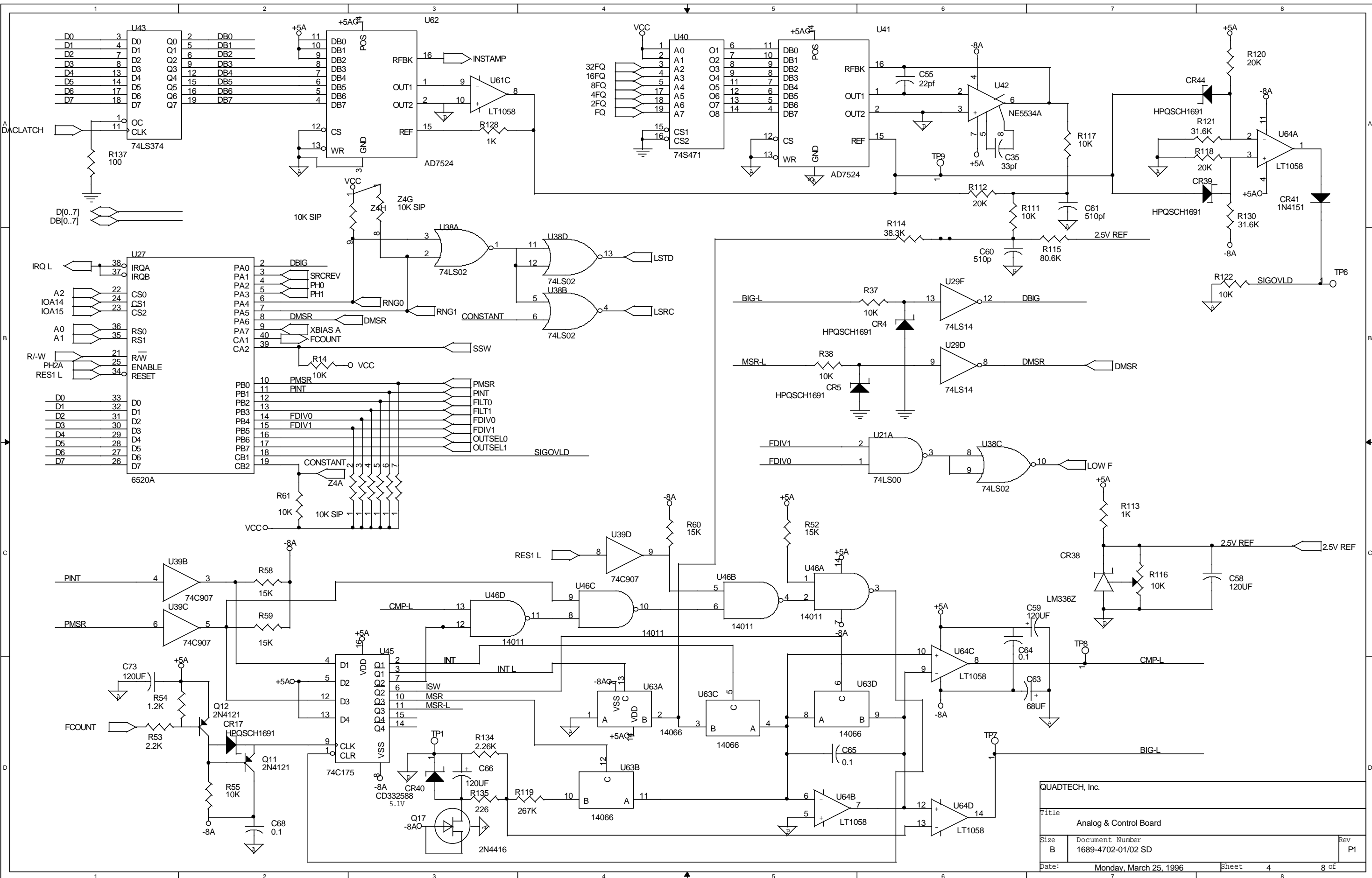
NO DISCLOSURE, REPRODUCTION,

QuadTech, Inc.		
Title Analog & Control Board		
Size B	Document Number 1689-4702-01/02 SD	Rev P1
Date: Monday, March 25, 1996	Sheet 1	8 of



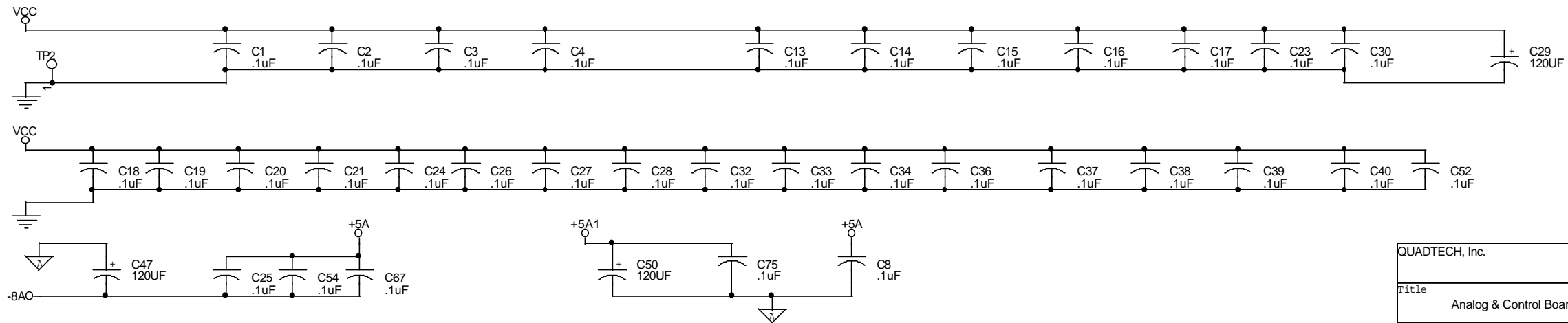
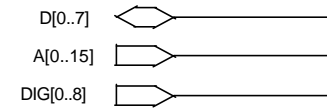
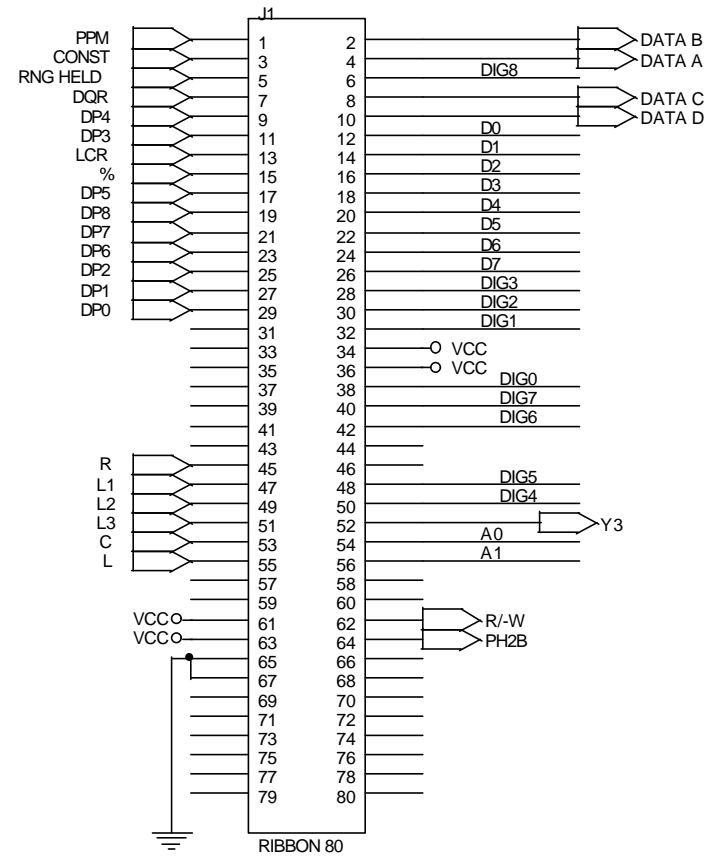
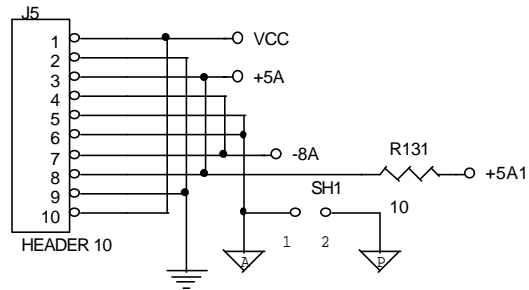
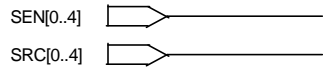
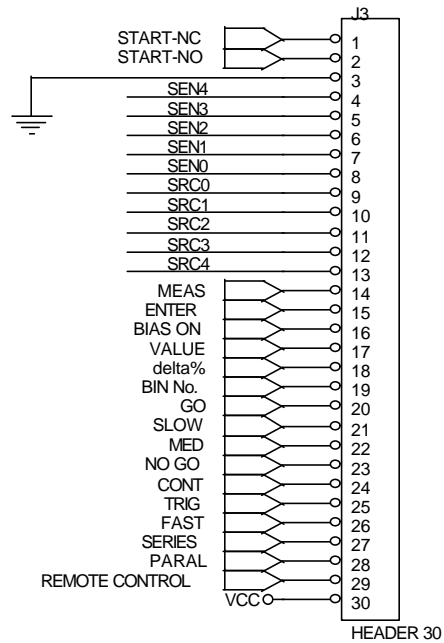


QUADTECH, Inc.		
Title Analog & Control Board		
Size B	Document Number 1689-4702-01/02 SD	Rev P1
Date: Monday, March 25, 1996	Sheet 3	8 of



QUADTECH, Inc.		
Title Analog & Control Board		
Size B	Document Number 1689-4702-01/02 SD	Rev P1
Date: Monday, March 25, 1996	Sheet 4	8 of





PROPRIETARY:

THIS DOCUMENT CONTAINS PROPRIETARY DATA OF QUADTECH, INC. OR USE OF ANY PART THEREOF MAY BE MADE EXCEPT BY WRITTEN PERMISSION

NO DISCLOSURE, REPRODUCTION,

QUADTECH, Inc.

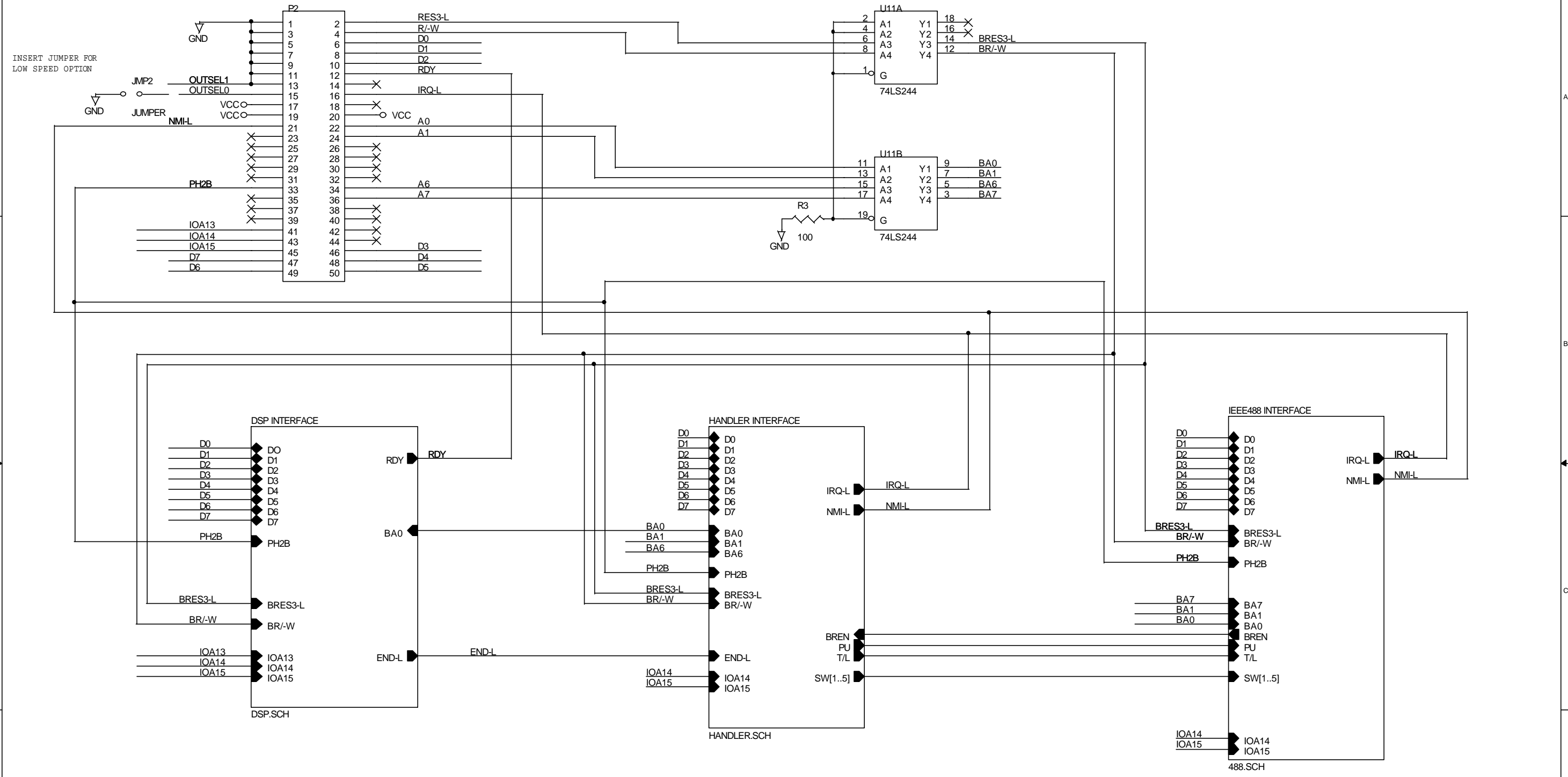
Title  
Analog & Control Board

Size B Document Number  
1689-4702-01/02 SD

Rev  
P1

Date: Monday, March 25, 1996 Sheet 6 of 8

Pin 2 - 50 on component side

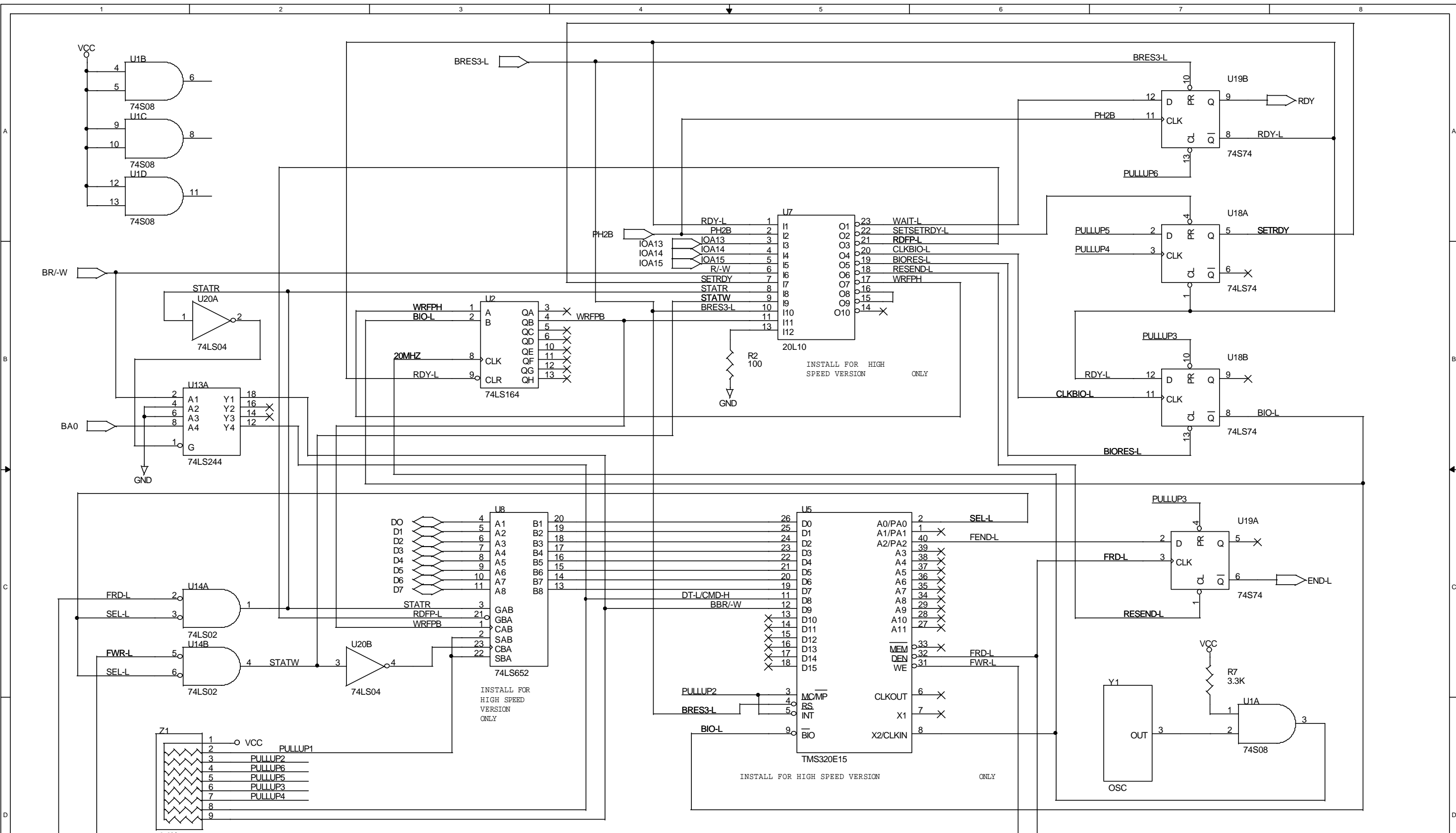


Proprietary:

This document contains PROPRIETARY data of QuadTech, Inc. No disclosure, reproduction, or use of any part thereof may be made except by written permission.

QuadTech, Inc.  
 45 Main St.  
 Bolton, MA 01740-1107

Size	Document Number	Rev
B	1689-4620	D1
Date:	Monday, February 12, 1996	Sheet 2 of 5



Proprietary:

This document contains PROPRIETARY data of QuadTech, Inc. No disclosure, reproduction, or use of any part thereof may be made except by written permission.

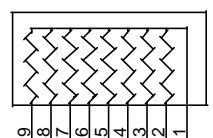
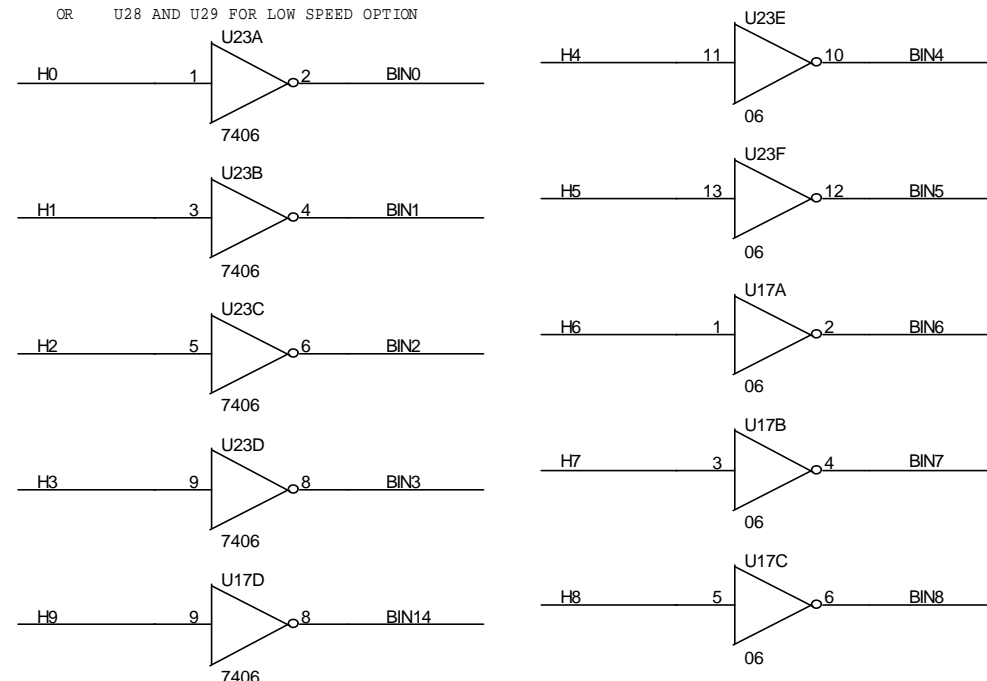
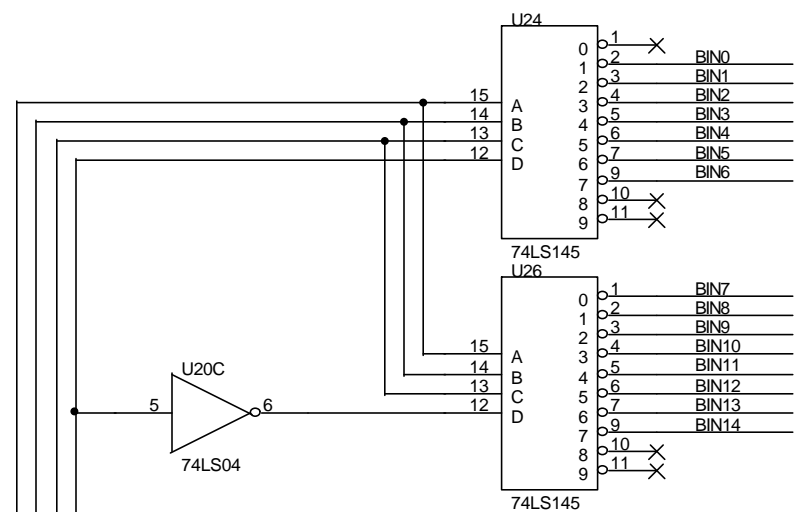
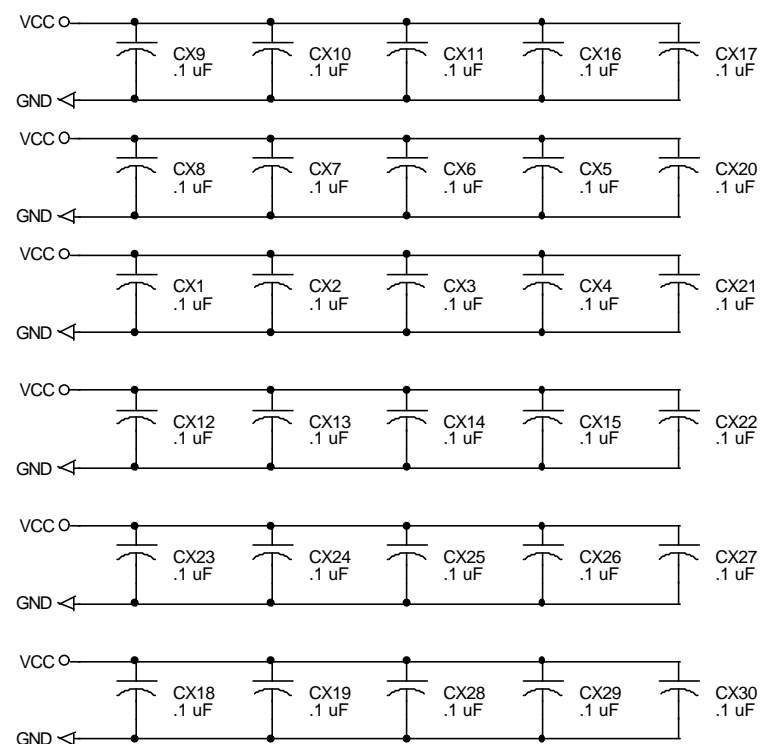
DSP INTERFACE

QuadTech, Inc. 45 Main St. Bolton, MA 01740-1107		
Size B	Document Number 1689-4620	Rev D1
Date: Monday, February 12, 1996	Sheet 3	5 of

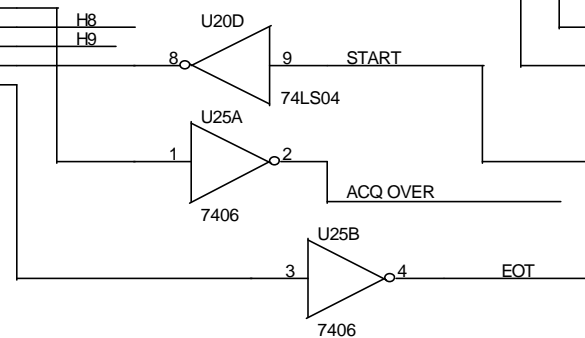
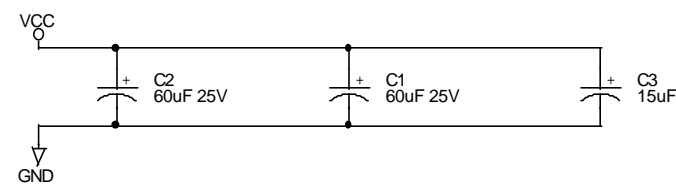
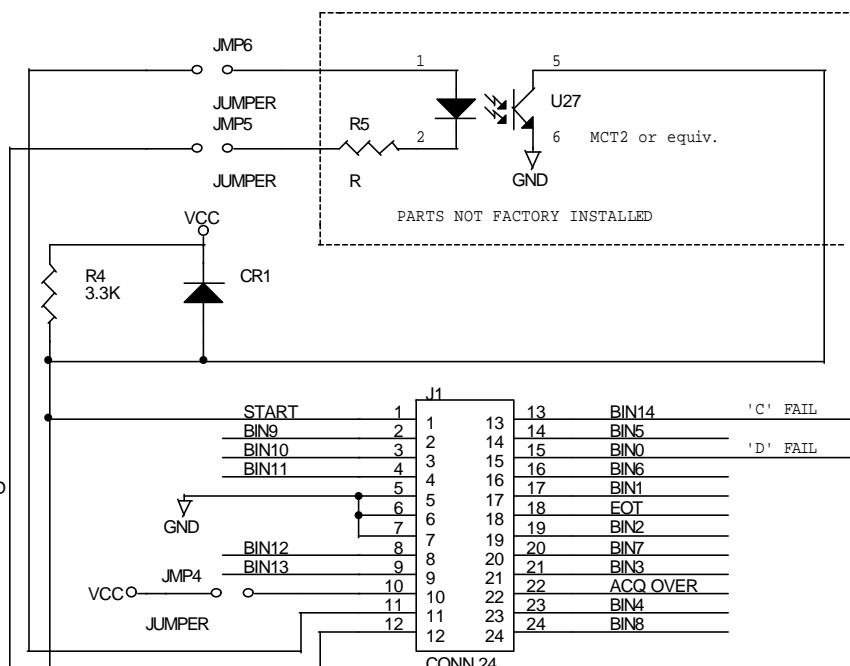
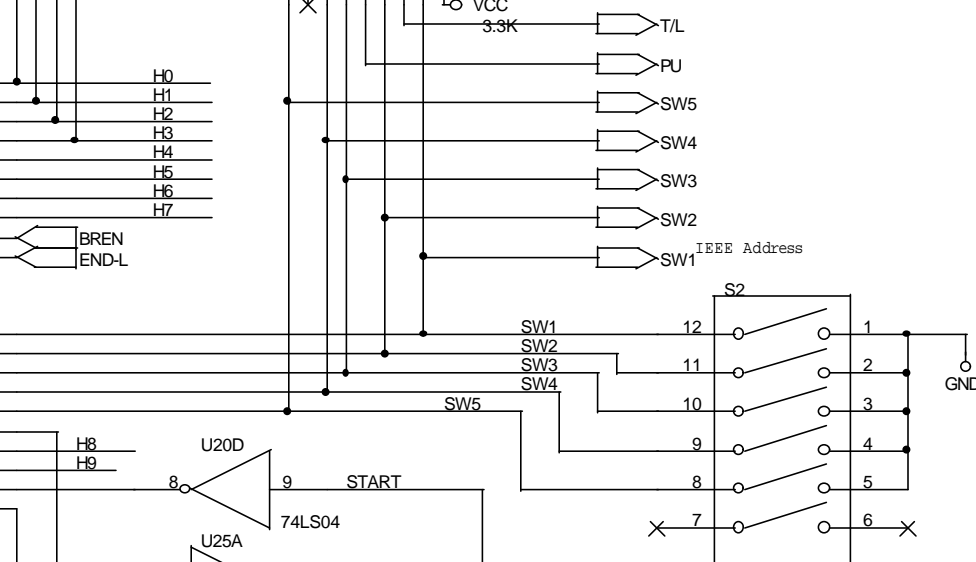
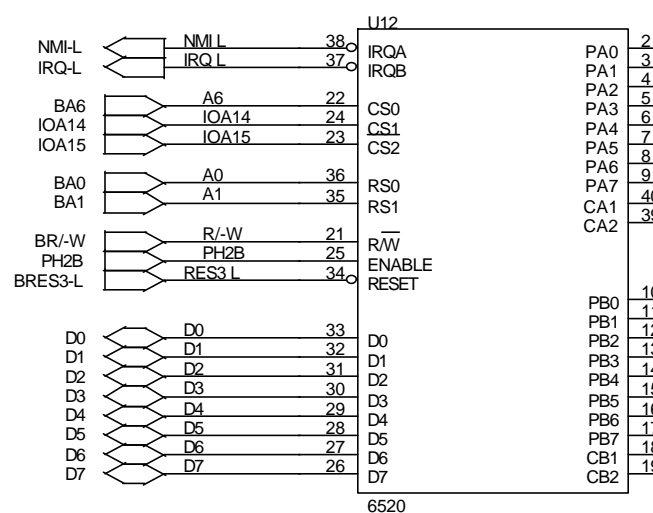


INSTALL U21 AND U22 FOR HIGH SPEED OPTION

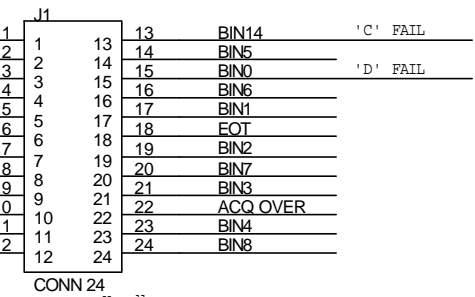
OR U28 AND U29 FOR LOW SPEED OPTION



JUMPER JP3 and JP4 FOR OPTIONAL OPTO ISOLATION Not Factory installed



FACTORY SETTINGS  
SW1, SW2 OPEN  
SW3, SW4, SW5 CLOSED

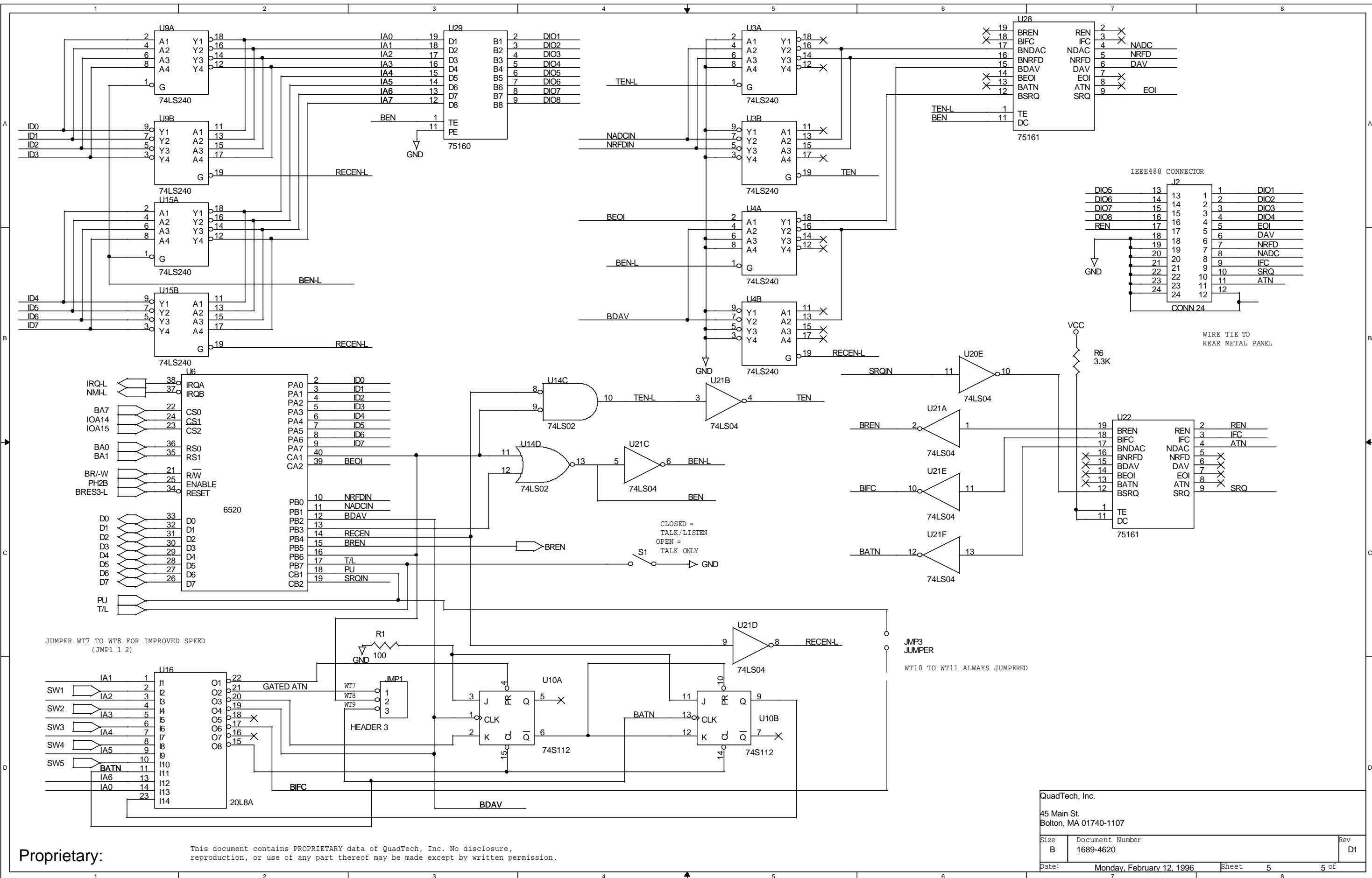


Proprietary:

This document contains PROPRIETARY data of QuadTech, Inc. No disclosure, reproduction, or use of any part thereof may be made except by written permission.

QuadTech, Inc.  
45 Main St.  
Bolton, MA 01740-1107

Size	Document Number	Rev
B	1689-4620	D1
Date:	Monday, February 12, 1996	Sheet 4 of 5

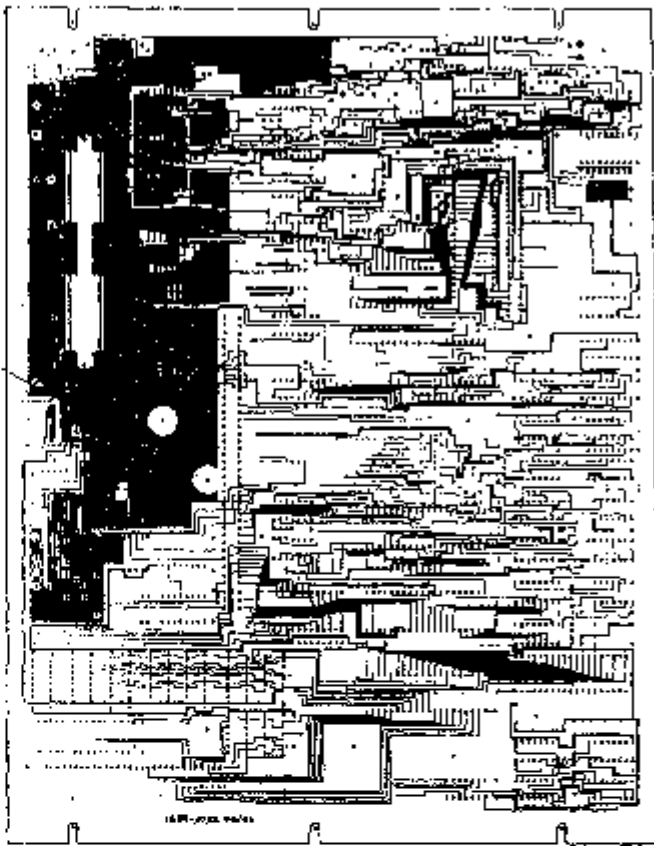


Proprietary:

This document contains PROPRIETARY data of QuadTech, Inc. No disclosure, reproduction, or use of any part thereof may be made except by written permission.

QuadTech, Inc.		
45 Main St. Bolton, MA 01740-1107		
Size	Document Number	Rev
B	1689-4620	D1
Date:	Monday, February 12, 1996	Sheet 5 of 5





SCHEMATIC MASKED FROM LAYER 1

40 TRACKS

16 PIN - 0.025 PITCH

Figure 6-2. Kain Board layout from trace 2, 1689 (00)  
 PARTS LISTS AND DIAGRAMS 8-8



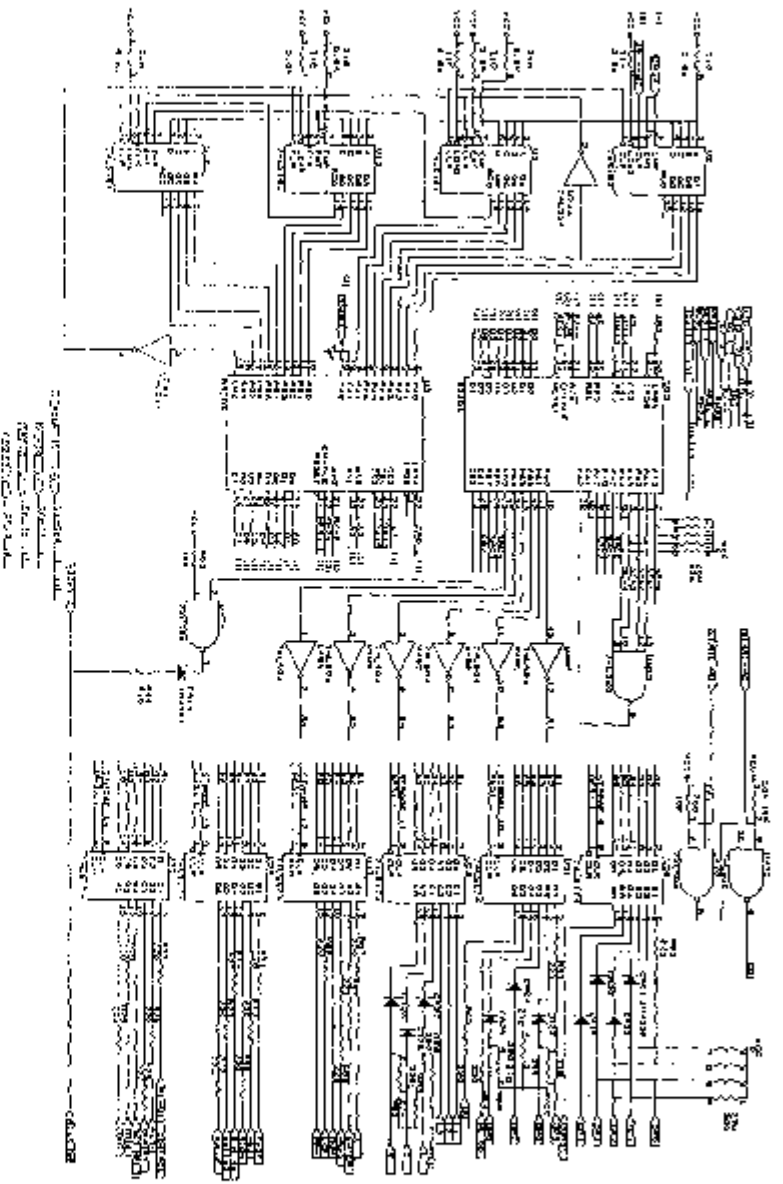


Figure 6-9. Main Board: schematics sheet 5, 1698-170; PARTS LIST AND DIAGRAMS.



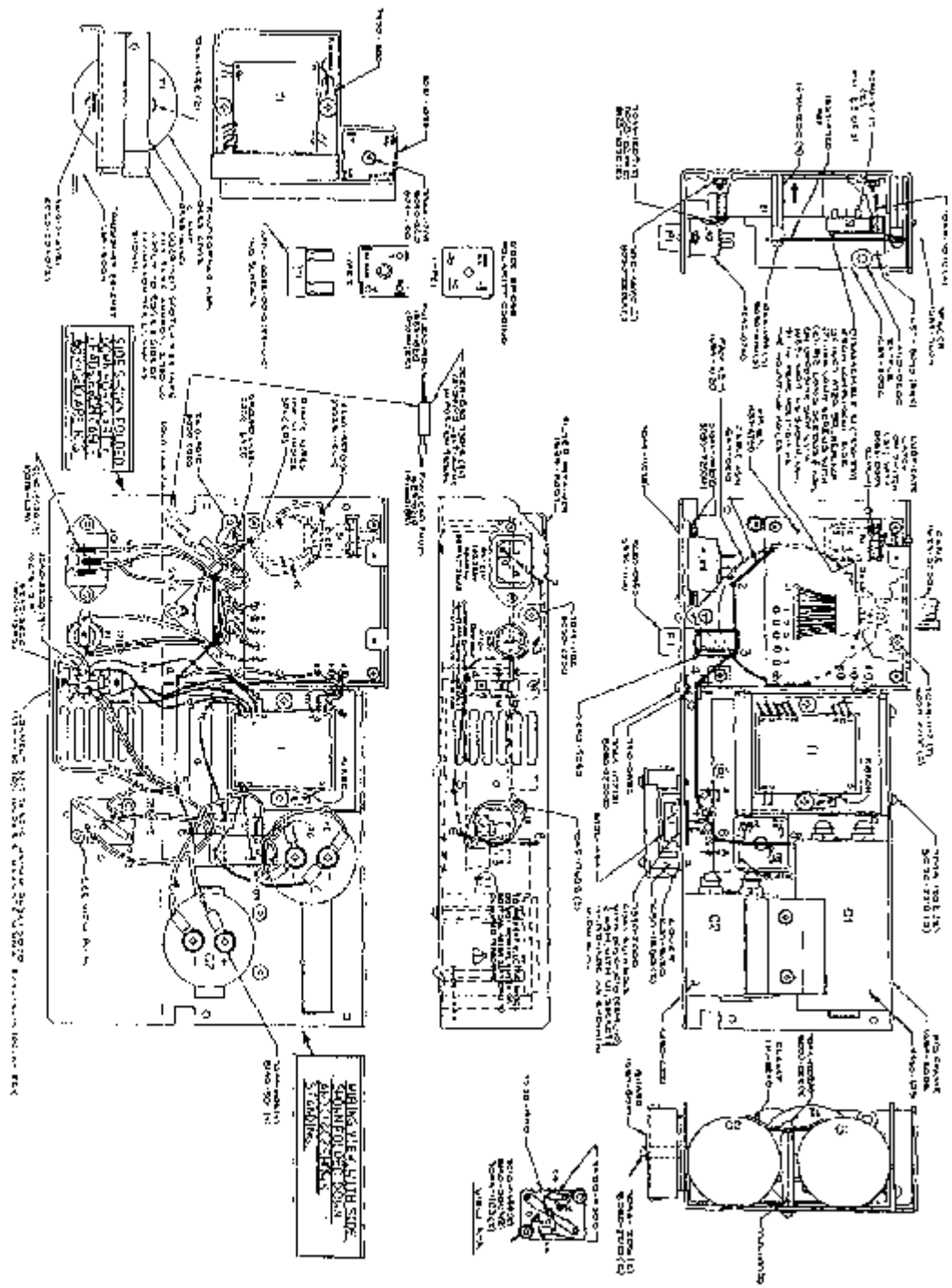


Figure 6.13 Power Supply assembly, 1885-2K  
 PARTS LISTS AND DIAGRAMS B-1



ELECTRICAL PARTS LISTS

302724 Assembly Kit/400 Part 168-442

REVISED	DESCRIPTION	PART NO.	QTY	MFG PART NUMBER
2	CAP TANT 1.1 UF 50VCT 20V	440-430	54218	182D161000042
3	CAP TANT 1.1 UF 50VCT 20V	440-430	54218	182D161000042
4	CAP TANT 1.1 UF 50VCT 20V	440-430	54218	182D161000042
5	CAP CER 100VND 01 UF 10VCT 50V 5	440-431	52842	182D161000042
6	CAP CER 100VND 01 UF 10VCT 50V 5	440-431	52842	182D161000042
7	CAP TANT 1.1 UF 50VCT 20V	440-430	54218	182D161000042
8	COIL RESISTOR 10000	401-101	14433	114433
9	COIL RESISTOR 10000	401-101	14433	114433
10	COIL RESISTOR 10000	401-101	14433	114433
11	RECT 1N4001 100V 2A SI 400MA	501-101	14433	114433
12	RECT 1N4001 100V 2A SI 400MA	501-101	14433	114433
13	SWITCH PUSHBUTTON AC 115V	170-100	24433	7810-1072
14	6 LINEAL INDUCTION	512-102	12000	INDUCTION
15	6 LINEAL INDUCTION	512-102	12000	INDUCTION

ELECTRICAL PARTS LISTS

302724 Assembly Kit/400 Part 168-408

REVISED	DESCRIPTION	PART NO.	QTY	MFG PART NUMBER
1	COIL ALUMINA 4000 1/2 50V	440-431	54218	182D161000042
2	COIL ALUMINA 4000 1/2 50V	440-431	54218	182D161000042
3	COIL TANT 1.1 UF 50VCT 20V	440-430	54218	182D161000042
4	COIL TANT 1.1 UF 50VCT 20V	440-430	54218	182D161000042
5	COIL TANT 1.1 UF 50VCT 20V	440-430	54218	182D161000042
6	COIL TANT 1.1 UF 50VCT 20V	440-430	54218	182D161000042
7	COIL TANT 1.1 UF 50VCT 20V	440-430	54218	182D161000042
8	RECT 1N4001 100V 2A SI 400MA	501-101	14433	114433
9	RECT 1N4001 100V 2A SI 400MA	501-101	14433	114433
10	RECT 1N4001 100V 2A SI 400MA	501-101	14433	114433
11	RECT 1N4001 100V 2A SI 400MA	501-101	14433	114433
12	RECT 1N4001 100V 2A SI 400MA	501-101	14433	114433
13	RECT 1N4001 100V 2A SI 400MA	501-101	14433	114433
14	RECT 1N4001 100V 2A SI 400MA	501-101	14433	114433
15	RECT 1N4001 100V 2A SI 400MA	501-101	14433	114433
16	RECT 1N4001 100V 2A SI 400MA	501-101	14433	114433
17	RECT 1N4001 100V 2A SI 400MA	501-101	14433	114433
18	RECT 1N4001 100V 2A SI 400MA	501-101	14433	114433
19	RECT 1N4001 100V 2A SI 400MA	501-101	14433	114433
20	RECT 1N4001 100V 2A SI 400MA	501-101	14433	114433
21	RECT 1N4001 100V 2A SI 400MA	501-101	14433	114433
22	RECT 1N4001 100V 2A SI 400MA	501-101	14433	114433
23	RECT 1N4001 100V 2A SI 400MA	501-101	14433	114433
24	RECT 1N4001 100V 2A SI 400MA	501-101	14433	114433
25	RECT 1N4001 100V 2A SI 400MA	501-101	14433	114433
26	RECT 1N4001 100V 2A SI 400MA	501-101	14433	114433
27	RECT 1N4001 100V 2A SI 400MA	501-101	14433	114433
28	RECT 1N4001 100V 2A SI 400MA	501-101	14433	114433
29	RECT 1N4001 100V 2A SI 400MA	501-101	14433	114433
30	RECT 1N4001 100V 2A SI 400MA	501-101	14433	114433
31	RECT 1N4001 100V 2A SI 400MA	501-101	14433	114433
32	RECT 1N4001 100V 2A SI 400MA	501-101	14433	114433
33	RECT 1N4001 100V 2A SI 400MA	501-101	14433	114433
34	RECT 1N4001 100V 2A SI 400MA	501-101	14433	114433
35	RECT 1N4001 100V 2A SI 400MA	501-101	14433	114433
36	RECT 1N4001 100V 2A SI 400MA	501-101	14433	114433
37	RECT 1N4001 100V 2A SI 400MA	501-101	14433	114433
38	RECT 1N4001 100V 2A SI 400MA	501-101	14433	114433
39	RECT 1N4001 100V 2A SI 400MA	501-101	14433	114433
40	RECT 1N4001 100V 2A SI 400MA	501-101	14433	114433
41	RECT 1N4001 100V 2A SI 400MA	501-101	14433	114433
42	RECT 1N4001 100V 2A SI 400MA	501-101	14433	114433
43	RECT 1N4001 100V 2A SI 400MA	501-101	14433	114433
44	RECT 1N4001 100V 2A SI 400MA	501-101	14433	114433
45	RECT 1N4001 100V 2A SI 400MA	501-101	14433	114433
46	RECT 1N4001 100V 2A SI 400MA	501-101	14433	114433
47	RECT 1N4001 100V 2A SI 400MA	501-101	14433	114433
48	RECT 1N4001 100V 2A SI 400MA	501-101	14433	114433
49	RECT 1N4001 100V 2A SI 400MA	501-101	14433	114433
50	RECT 1N4001 100V 2A SI 400MA	501-101	14433	114433
51	RECT 1N4001 100V 2A SI 400MA	501-101	14433	114433
52	RECT 1N4001 100V 2A SI 400MA	501-101	14433	114433
53	RECT 1N4001 100V 2A SI 400MA	501-101	14433	114433
54	RECT 1N4001 100V 2A SI 400MA	501-101	14433	114433
55	RECT 1N4001 100V 2A SI 400MA	501-101	14433	114433
56	RECT 1N4001 100V 2A SI 400MA	501-101	14433	114433
57	RECT 1N4001 100V 2A SI 400MA	501-101	14433	114433
58	RECT 1N4001 100V 2A SI 400MA	501-101	14433	114433
59	RECT 1N4001 100V 2A SI 400MA	501-101	14433	114433
60	RECT 1N4001 100V 2A SI 400MA	501-101	14433	114433
61	RECT 1N4001 100V 2A SI 400MA	501-101	14433	114433
62	RECT 1N4001 100V 2A SI 400MA	501-101	14433	114433
63	RECT 1N4001 100V 2A SI 400MA	501-101	14433	114433
64	RECT 1N4001 100V 2A SI 400MA	501-101	14433	114433
65	RECT 1N4001 100V 2A SI 400MA	501-101	14433	114433
66	RECT 1N4001 100V 2A SI 400MA	501-101	14433	114433
67	RECT 1N4001 100V 2A SI 400MA	501-101	14433	114433
68	RECT 1N4001 100V 2A SI 400MA	501-101	14433	114433
69	RECT 1N4001 100V 2A SI 400MA	501-101	14433	114433
70	RECT 1N4001 100V 2A SI 400MA	501-101	14433	114433
71	RECT 1N4001 100V 2A SI 400MA	501-101	14433	114433
72	RECT 1N4001 100V 2A SI 400MA	501-101	14433	114433
73	RECT 1N4001 100V 2A SI 400MA	501-101	14433	114433
74	RECT 1N4001 100V 2A SI 400MA	501-101	14433	114433
75	RECT 1N4001 100V 2A SI 400MA	501-101	14433	114433
76	RECT 1N4001 100V 2A SI 400MA	501-101	14433	114433
77	RECT 1N4001 100V 2A SI 400MA	501-101	14433	114433
78	RECT 1N4001 100V 2A SI 400MA	501-101	14433	114433
79	RECT 1N4001 100V 2A SI 400MA	501-101	14433	114433
80	RECT 1N4001 100V 2A SI 400MA	501-101	14433	114433
81	RECT 1N4001 100V 2A SI 400MA	501-101	14433	114433
82	RECT 1N4001 100V 2A SI 400MA	501-101	14433	114433
83	RECT 1N4001 100V 2A SI 400MA	501-101	14433	114433
84	RECT 1N4001 100V 2A SI 400MA	501-101	14433	114433
85	RECT 1N4001 100V 2A SI 400MA	501-101	14433	114433
86	RECT 1N4001 100V 2A SI 400MA	501-101	14433	114433
87	RECT 1N4001 100V 2A SI 400MA	501-101	14433	114433
88	RECT 1N4001 100V 2A SI 400MA	501-101	14433	114433
89	RECT 1N4001 100V 2A SI 400MA	501-101	14433	114433
90	RECT 1N4001 100V 2A SI 400MA	501-101	14433	114433
91	RECT 1N4001 100V 2A SI 400MA	501-101	14433	114433
92	RECT 1N4001 100V 2A SI 400MA	501-101	14433	114433
93	RECT 1N4001 100V 2A SI 400MA	501-101	14433	114433
94	RECT 1N4001 100V 2A SI 400MA	501-101	14433	114433
95	RECT 1N4001 100V 2A SI 400MA	501-101	14433	114433
96	RECT 1N4001 100V 2A SI 400MA	501-101	14433	114433
97	RECT 1N4001 100V 2A SI 400MA	501-101	14433	114433
98	RECT 1N4001 100V 2A SI 400MA	501-101	14433	114433
99	RECT 1N4001 100V 2A SI 400MA	501-101	14433	114433
100	RECT 1N4001 100V 2A SI 400MA	501-101	14433	114433

NOTE: 148 ASSEMBLY INCLUDES CIRCUIT BOARD 501-101

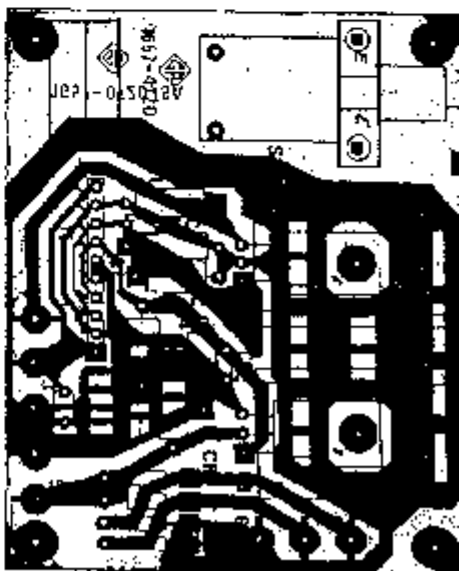
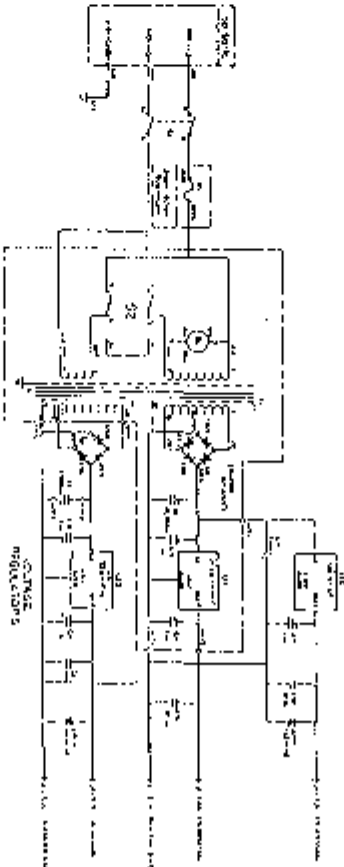


Figure 6-18. Power Supply Board, layout, 1683-4790



1683-4790

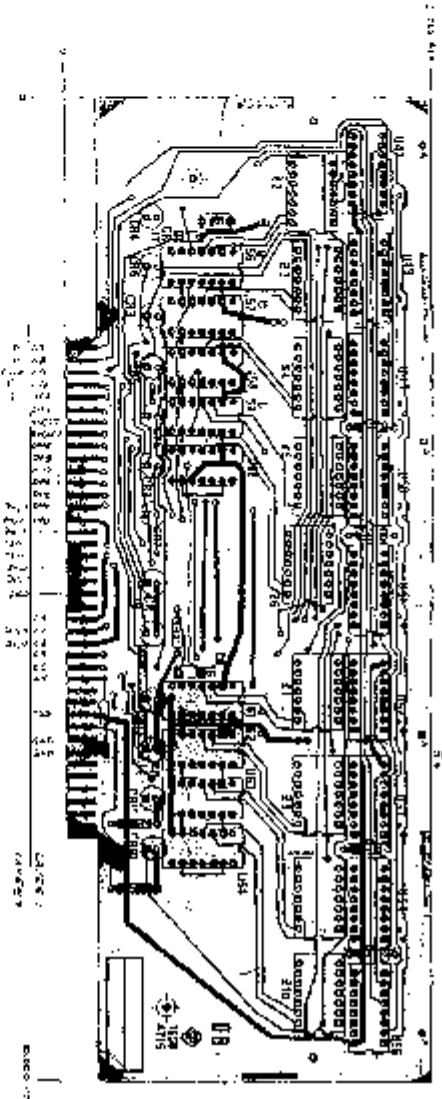
Figure 6-14. Power Supply, schematic, 1683-2035-510

6-14 PARTS LISTS AND DIAGRAMS

ELECTRICAL PARTS LISTS

OVERLAY BOARD BY P. V. USA-R-13

REVISED	DESCRIPTION	PART NO.	QTY	WTR PART NUMBER
1	COVER BOARD 0.06 30XCT 30XCT	490-3100	1332	TR-1300-01-100M
2	CAP 20V 750 0.10F ELECT 50V	490-3101	6056	TR-1300-02-000M
3	LED 310	307500	7134	CM-3
4	LED 310	307500	7134	CM-3
5	LED 310	307500	7134	CM-3
6	LED 310	307500	7134	CM-3
7	LED 310	307500	7134	CM-3
8	LED 310	307500	7134	CM-3
9	LED 310	307500	7134	CM-3
10	LED 310	307500	7134	CM-3
11	LED 310	307500	7134	CM-3
12	LED 310	307500	7134	CM-3
13	LED 310	307500	7134	CM-3
14	LED 310	307500	7134	CM-3
15	LED 310	307500	7134	CM-3
16	LED 310	307500	7134	CM-3
17	LED 310	307500	7134	CM-3
18	LED 310	307500	7134	CM-3
19	LED 310	307500	7134	CM-3
20	LED 310	307500	7134	CM-3
21	LED 310	307500	7134	CM-3
22	LED 310	307500	7134	CM-3
23	LED 310	307500	7134	CM-3
24	LED 310	307500	7134	CM-3
25	LED 310	307500	7134	CM-3
26	LED 310	307500	7134	CM-3
27	LED 310	307500	7134	CM-3
28	LED 310	307500	7134	CM-3
29	LED 310	307500	7134	CM-3
30	LED 310	307500	7134	CM-3
31	LED 310	307500	7134	CM-3
32	LED 310	307500	7134	CM-3
33	LED 310	307500	7134	CM-3
34	LED 310	307500	7134	CM-3
35	LED 310	307500	7134	CM-3
36	LED 310	307500	7134	CM-3
37	LED 310	307500	7134	CM-3
38	LED 310	307500	7134	CM-3
39	LED 310	307500	7134	CM-3
40	LED 310	307500	7134	CM-3
41	LED 310	307500	7134	CM-3
42	LED 310	307500	7134	CM-3
43	LED 310	307500	7134	CM-3
44	LED 310	307500	7134	CM-3
45	LED 310	307500	7134	CM-3
46	LED 310	307500	7134	CM-3
47	LED 310	307500	7134	CM-3
48	LED 310	307500	7134	CM-3
49	LED 310	307500	7134	CM-3
50	LED 310	307500	7134	CM-3
51	LED 310	307500	7134	CM-3
52	LED 310	307500	7134	CM-3
53	LED 310	307500	7134	CM-3
54	LED 310	307500	7134	CM-3
55	LED 310	307500	7134	CM-3
56	LED 310	307500	7134	CM-3
57	LED 310	307500	7134	CM-3
58	LED 310	307500	7134	CM-3
59	LED 310	307500	7134	CM-3
60	LED 310	307500	7134	CM-3
61	LED 310	307500	7134	CM-3
62	LED 310	307500	7134	CM-3
63	LED 310	307500	7134	CM-3
64	LED 310	307500	7134	CM-3
65	LED 310	307500	7134	CM-3
66	LED 310	307500	7134	CM-3
67	LED 310	307500	7134	CM-3
68	LED 310	307500	7134	CM-3
69	LED 310	307500	7134	CM-3
70	LED 310	307500	7134	CM-3



**CAUTION**  
 THE FOLLOWING COMPONENTS  
 REQUIRE PROTECTION AT ALL TIMES  
 FROM STATIC ELECTRICITY  
 DURING HANDLING

Figure 113. Overlay Board Layout, 1358-171  
 PARTS LISTS AND DIAGRAMS 0-1



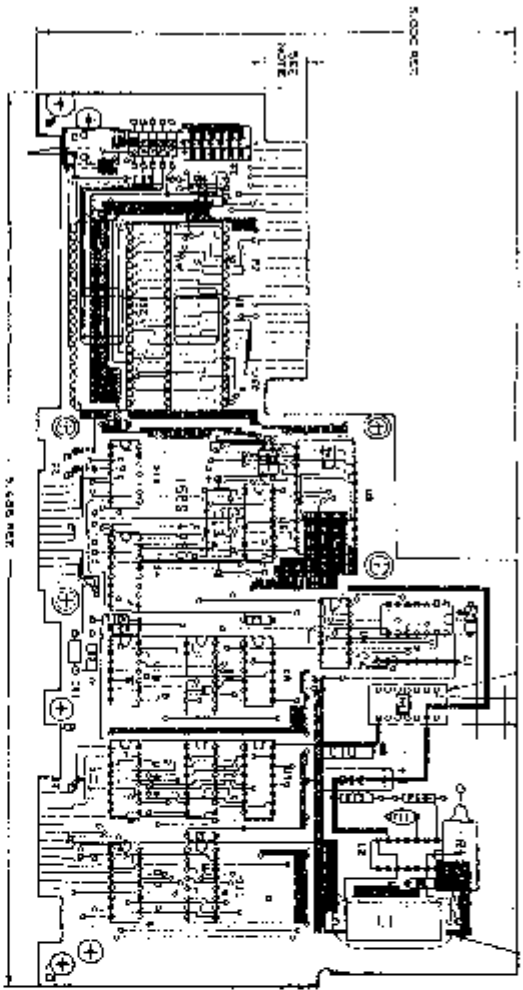


Figure 5-7 High-Speed Interface Board, Section 1, 1386-1720

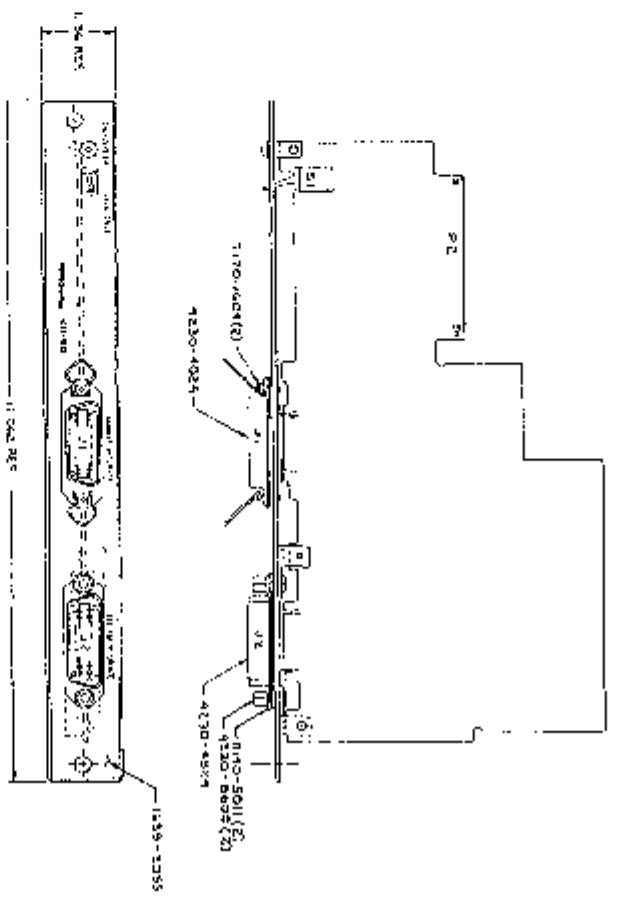


Figure 5-8 High-Speed Interface Board, Section 2, 1386-1720

PARTS LISTS AND DIAGRAMS 6-1












**CAUTION**   
 THE SHIELDING REQUIREMENTS  
 REQUIRE SPECIAL HANDLING  
 FOR X-RAY PROTECTION  
 REFER TO IEC60603-2  
 CLASSIFICATION

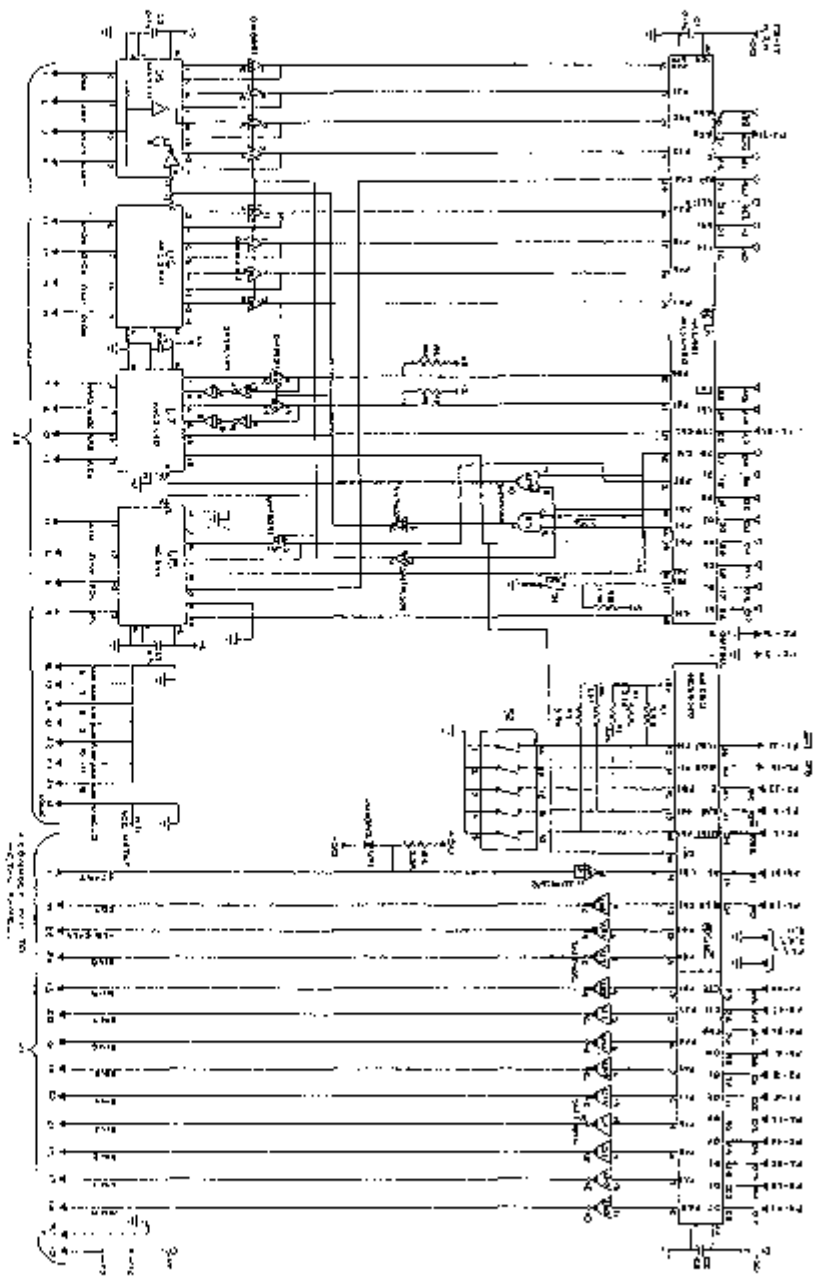


Figure 6-23. Interface Option schematic, 1659-4730-07/A  
 6-24 PARTS LISTS AND DIAGRAMS



